

Learning to Be a World Citizen

INTERNATIONAL SCHOOL
OF DÜSSELDORF E.V.



Senior School Profile

Welcome to one of the
IB flagship schools in Europe



INTERNATIONAL SCHOOL OF DÜSSELDORF E.V.

Niederrheinstraße 336 | 40489 | Düsseldorf | Germany

Tel: +49 (0)211 9406 6 | Fax: +49 (0)211 9406 804

info@isdedu.de | www.isdedu.de

Director

Simon Head | director@isdedu.de

SRS Principal

Michael Coffey | coffeym@isdedu.de

IBDP Coordinator

Barry O'Farrell | ofarrell@isdedu.de

COUNSELLING DEPARTMENT OFFICE

Tel: +49 (0)211 9406 722 | Fax: +49 (0)211 9406 860

www.isdcounselling.org

Grade 11/12 Counsellors

Keith Layman (A-K) | layman@isdedu.de

Ginny Reiss (L-Z) | reiss@isdedu.de

German University Counsellor

Christiane Güldner | gueldner@isdedu.de

Japanese University Counsellor

Takashi Yoshida | yoshida@isdedu.de

ACCREDITATION

Council of International Schools

New England Association of Schools and Colleges

State of North Rhine-Westphalia, Department of Education

CEEB CODE: 734315

MISSION

- **We inspire** our students to be confident, creative and critical thinkers.
- **We work together** to challenge and support our students to be successful and responsible in an evolving world.
- **We are** an international community of learners.

THE SCHOOL

ISD is an independent, non-profit, university-preparatory school, founded in 1968 to serve the educational needs of the international community in and around Düsseldorf. The school has approximately 1100 students enrolled from Reception to Grade 12. Almost 700 students are enrolled in the Senior School (6-12) and represent more than 50 nationalities, with German (21%), U.S. (16%), Japanese (11%) and UK (7%) comprising the four largest groups. The language of instruction is English.

FACULTY

The Senior School faculty consists of 94 teachers representing 16 nationalities. 54 hold Master's degrees or the equivalent and 4 hold PhD's. The student-faculty ratio is 7 to 1 with an average class size of 15.

CURRICULUM

ISD is an International Baccalaureate World School offering all three IB programmes: Primary Years (Preparatory-5), Middle Years (6-10) and Diploma (11-12). Students in grades 9-12 follow a university-preparatory programme leading to the IB Diploma or DP Courses (Certificates), in addition to the ISD High School Diploma.

ENGLISH AS AN ADDITIONAL LANGUAGE (EAL)

EAL students usually spend three semesters in the EAL programme, with three to four EAL classes per day. While in the programme, students attend mainstream mathematics and science classes at grade level. Depending on proficiency, these students follow a full schedule of mainstream classes after one to four semesters. After completing the EAL programme, students must attend mainstream classes for one full year in order to graduate. EAL is not offered in grades 11 and 12.

EXTRACURRICULAR ACTIVITIES

ISD offers an array of sporting, cultural, service and personal enrichment activities:

Fine and performing arts	Global Issues Network
Athletics and team sports	Model United Nations
Student Athlete Advisory Board	Student Council
Environmental projects	Speech and Debate
Judicial Board	Sound & Lights
Ambassador Team	Yearbook Team
Habitat for Humanity	Project Tanzania
World Volunteer Laos	Friends of Nepal
Peace Village	Math competitions
Band, choir & music ensembles	Green Team
International Honour Society	ISDifferences
Mentoring Programme	Gaming Club
Mother Tongue Language Lessons	Student Academic Advisory Committee
Duke of Edinburgh's Award	

EVALUATION SCHEME

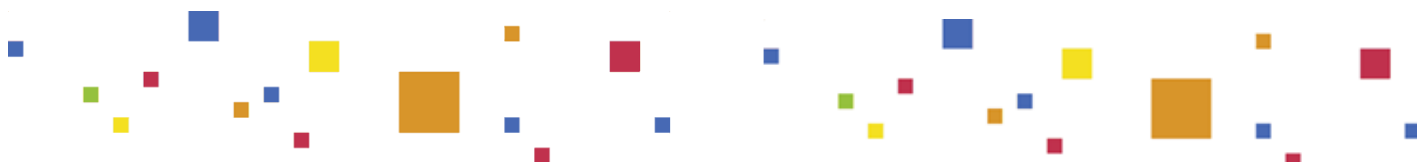
ISD conforms to the IB Diploma Programme system with grades ranging from 7 (high) to 1 (low). This system is used for all internal assessment, external assessment and on official transcripts. Achievement is reported once per year in grades 9 and 10 (June) and twice per year in grades 11 and 12 (January and June). The January grade indicates progress until December, while the June grade indicates achievement for the year.

ISD HIGH SCHOOL DIPLOMA REQUIREMENTS

To be awarded the ISD High School Diploma a student must:

- Complete four years of education in grades 9-12 or their equivalents.
- Take at least one year of mainstream English.
- Take three consecutive years of the same foreign language unless the Principal makes an exception.
- Study German to a minimum competency level equivalent to ISD's "Advanced German" (normally three years).
- Successfully complete grades 9 and 10. At ISD this means having followed years 4 and 5 of the IB MYP programme, including at least three options, with no more than two final academic achievement grades below '3' in either year.
- Earn a combined minimum of 40 points over grades 11 and 12, with no more than four final academic achievement grades below '3', of which no more than two may be earned in 12th grade.
- Successfully complete the Service as Action (grade 9-10) and/or Creativity / Activity / Service (grade 11-12) requirements.
- **Most ISD courses last one full year and are equivalent to a 1.0 credit course.**

GRADE	The student demonstrates:
7	<ul style="list-style-type: none"> ▪ A consistent and thorough understanding of the required knowledge and skills. ▪ Ability to apply required knowledge and skills routinely in a wide variety of situations. ▪ Consistent evidence of analysis, synthesis and evaluation where appropriate. ▪ Frequent originality and/or insight as appropriate. ▪ Work of high quality on a regular basis.
6	<ul style="list-style-type: none"> ▪ A consistent and thorough understanding of the required knowledge and skills. ▪ Ability to apply required knowledge and skills in a wide variety of situations. ▪ Consistent evidence of analysis, synthesis and evaluation where appropriate. ▪ Frequent originality and/or insight as appropriate.
5	<ul style="list-style-type: none"> ▪ A consistently good understanding of the required knowledge and skills. ▪ Ability to apply required knowledge and skills in a variety of situations. ▪ Regular evidence of analysis, synthesis and evaluation where appropriate. ▪ Occasional originality and/or insight as appropriate.
4	<ul style="list-style-type: none"> ▪ Satisfactory general understanding of the required knowledge and skills. ▪ Ability to apply required knowledge and skills effectively in typical situations. ▪ Occasional evidence of the skills of analysis, synthesis and evaluation where appropriate.
3	<ul style="list-style-type: none"> ▪ Limited achievement against most of the objectives, or clear difficulties in some areas. ▪ Limited understanding of the required knowledge and skills. ▪ Ability to apply required knowledge and skills fully in typical classroom situations only with support.
2	<ul style="list-style-type: none"> ▪ Very limited achievement against all objectives. ▪ Difficulty in understanding the required knowledge and skills. ▪ Inability to apply required knowledge and skills fully in typical classroom situations, even with support.
1	<ul style="list-style-type: none"> ▪ Minimal achievement in terms of the objectives.



CLASS RANK AND GRADE POINT AVERAGE

- We calculate GPA on a 7.0 basis using ISD coursework only.
- We do not weight DP HL or SL courses, though we consider all DP courses to be honours-level, particularly at HL.
- Due to the mobility of our students and the diversity of their educational backgrounds, it is difficult to provide an accurate or fair class rank.

Suggested U.S. GPA Equivalency Scale

ISD Grade / GPA	IBDP Descriptor	U.S. Grade / GPA
7 / 7.0	Exceptional	A+ / 4.5
6 / 6.0	Superior	A/A- / 4.0
5 / 5.0	Very Good	B+ / 3.5
4 / 4.0	Satisfactory	B / 3.0
3 / 3.0	Mediocre	C / 2.0
2 / 2.0	Poor	D / 1.0
1 / 0.0	Very Poor	F / 0.0

SAT SUMMARY – 2011 to 2015

Section	Middle 50%	Mean	Students
Critical Reading	500 - 640	564	
Math	540 - 690	612	
Writing	500 - 650	575	
Total	1550 - 1970	1751	118

SAT SUBJECT TEST SUMMARY – 2011 to 2015

Section	Middle 50%	Mean	Students
Biology - Ecology	630 - 660	647	3
Biology - Molecular	460 - 650	533	3
Chemistry	610 - 770	694	7
English Literature	580 - 700	638	6
French	630 - 800	715	2
German	720 - 800	758	9
Math Level I	620 - 710	692	5
Math Level II	640 - 800	735	17
Physics	690 - 760	743	7

ACT SUMMARY – 2011 to 2015

Section	Middle 50%	Mean	Students
English	23 - 31	26.9	
Math	22 - 29	26.0	
Reading	21 - 32	26.6	
Science	23 - 30	26.3	
Composite	22 - 29	26.4	34

THE IB DIPLOMA PROGRAMME AT ISD

The DP is a demanding pre-university programme that leads to external exams. It is designed for highly motivated students in their final two years of school. The DP curriculum emphasizes critical thinking, intercultural understanding, research skills and community service. More than 90% of ISD students in grades 11 and 12 choose to enrol in the DP, with the majority of the rest taking four or more Diploma Courses (certificates). The DP faculty consists of 36 teachers, 10 of whom are seasoned DP examiners.

To be awarded the IB Diploma a student must earn a minimum of 24 points in six areas (three at Higher Level and three at Standard Level), including: studies in language & literature; language acquisition; individuals & societies; sciences; mathematics; the arts. DP students must also complete CAS (Creativity/Activity/Service), Theory of Knowledge, and write an original 4,000 word Extended Essay. Students who do not pursue the full DP sit external examinations at the end of the two-year course, earning individual Certificates. All DP examinations are written and scored by the International Baccalaureate. Scores range from 7 (high) to 1 (low).

IB DIPLOMA PROGRAMME MEAN SCORES | CLASS OF 2015

92% of students earned the full Diploma | 60% Bilingual Diplomas
 40-45 pts | 14% 36-39 pts | 25% 32-35 pts | 21%
 28-31 pts | 21% 24-27 pts | 11%

Mean **total score** for IB Diploma Programme candidates (out of 45)
 2015 | 34.0 2014 | 33.2 2013 | 32.5 2012 | 33.0 2011 | 32.0

Mean **subject score** for IB Diploma Programme candidates (out of 7)
 2015 | 5.37 2014 | 5.27 2013 | 5.17 2012 | 5.31 2011 | 5.15

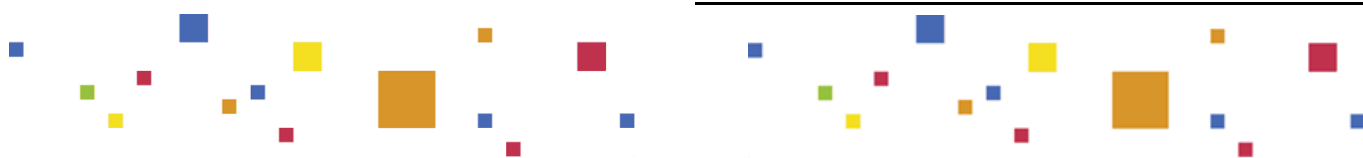
IB DIPLOMA PROGRAMME RESULTS | CLASS OF 2015

ISD is a non-selective IB Diploma Programme school. Any student who is motivated to attempt the full DP is given the opportunity to do so.

HL: Higher Level | SL: Standard Level | Scale: 7 (high) to 1 (low)

*Self-taught | **Sports, Exercise & Health Science

Subject	Grade Distribution						ISD Average	World Average
	7	6	5	4	3	2		
Studies in language and literature								
*Chinese A Lit SL		1		1			5.00	5.07
English A Lit HL	2	4	3	1			5.70	4.74
English A Lit SL		1	3	1			5.00	5.06
German A Lit HL			3	1			4.75	5.21
German A Lit SL	1	1	1				6.00	5.33
Japanese A Lit HL	5	10	1				6.25	6.00
Japanese A Lit SL	1	1			1		5.33	6.00
Korean A Lit HL			1				5.00	5.74
Korean A Lit SL		2					6.00	6.11
*Polish A Lit SL				1			4.00	4.40
*Russian A Lit SL		1		1			5.00	4.44
*Slovak A Lit SL			1				5.00	5.90
Eng A Lang/Lit HL	1	13	11	2			5.48	5.09
Eng A Lang/Lit SL	3	11	15	4			5.39	5.22
Ger A Lang/Lit HL	3	5	2	1			5.91	5.47
Ger A Lang/Lit SL	1	1	12	2			5.06	5.42
Language acquisition								
English B HL		4	12	4			5.00	5.72
English B SL		2		1			5.33	5.88
French B HL	1	3					6.25	5.22
French B SL		4					6.00	4.89
German B HL	6	3	2				6.36	5.77
German B SL	1	8					6.11	5.16
Spanish B HL	4						7.00	5.36
Spanish B SL	2						7.00	5.03
French Ab Init SL		1	1	1			4.50	5.03
German Ab Init SL	1	5		1	1		5.50	4.93
Japan Ab Init SL	1						7.00	4.94
Spanish Ab Init SL	1	1		2			5.25	5.06
Individuals and societies								
Economics HL	6	11	10	4	3	4	5.03	5.14
Economics SL	4	8	7	4	3		5.23	4.66
History (EU) HL	5	12	8	4	1		5.53	4.78
History SL	1	2	3				5.67	4.65
ITGS HL				2	2	1	3.20	4.26
ITGS SL					1		3.00	4.44
Psychology HL		2	6	3	1		4.75	4.67
Psychology SL	1	2	1	3			5.14	4.36
Sciences								
Biology HL		9	16	8	8		4.63	4.34
Biology SL	3	4	7	2	2	2	4.90	4.24
Chemistry HL	2	3	6	3	1	1	4.94	4.49
Chemistry SL	3	7	5	2	3	3	4.83	4.05
Physics HL	3	2	4	1	1	2	4.92	4.68
Physics SL	1	2	2	4	3	2	4.00	4.19
**SEHS SL	1	2	1	1	1		5.17	4.10
Mathematics								
Math Studies SL	1	3	3	4	4	3	4.11	4.48
Mathematics HL	2	4	3	3	2		5.07	4.43
Mathematics SL	5	12	19	14	14	5	4.49	4.43
The arts								
Music HL			2	2			4.50	4.45
Music Creating SL			1				5.00	3.92
Music So. Perf SL		1					6.00	4.43
Visual Arts A HL	1	7	4	4	3		4.95	4.84
Visual Arts A SL		2		4			4.67	4.58



98% of ISD students pursue higher education within one year of graduation. The remaining students typically pursue volunteer and/or internship opportunities or fulfil military/civil service obligations. The following is a list of universities and colleges where ISD students have been accepted over the past four years. Universities in bold indicate Class of 2015 matriculation.

AUSTRALIA

Monash University
University of New South Wales

CANADA

Bishop's University
Carleton University
McGill University
Queen's University
Ryerson University
University of British Columbia
University of Toronto
University of Waterloo
Western University
York University

GERMANY

Bucerius Law School
EBS Universität für Wirtschaft und Recht
Heinrich-Heine-Universität Düsseldorf
International School of Management
Jacobs University Bremen
Munich Business School
RWTH Aachen
Technische Universität München
Universität Duisburg-Essen
Universität Karlsruhe
Universität zu Köln

HONG KONG

The Hong Kong University of Science & Technology

ITALY

Università Bocconi

JAPAN (Class of 2014 Matriculation)

Doshisha University
Hitotsubashi University
Hokkaido University
International Christian University
Keio University
Kwansei Gakuin University
Kyushu University
Meiji University
Nara Women's University
Okayama University
Rikkyo University
Saitama University
Sophia University
Tohoku University
Tokyo University of Science (Tokyo Rika)
Waseda University
Yokohama City University
Yokohama National University

KOREA

Ewha Womans University
Sungkyunkwan University
Yonsei University

THE NETHERLANDS

Amsterdam Fashion Academy
Delft University of Technology
Eindhoven University of Technology
Erasmus University Rotterdam (7)
Frank Sanders Akademie
Hotel School The Hague
Leiden University (2)
Leiden University College The Hague
Maastricht University (3)
Stenden University of Applied Sciences
Tilburg University
Universiteit Utrecht
University College Maastricht
University College Roosevelt

University College Utrecht
University of Amsterdam
University of Groningen (2)
University of Twente

NORWAY

BI Norwegian School of Management

SPAIN

Universidad Ramon Llull - ESADE
IE University

SWITZERLAND

César Ritz Colleges
École Hôtelière de Lausanne
Universität St. Gallen
Universität Zürich

UNITED ARAB EMIRATES

New York University Abu Dhabi

UNITED KINGDOM

Abertay University
Aston University
Bournemouth University
Brunel University
Cardiff University
City University
Durham University
Glasgow School of Art
Goldsmiths College, University of London
Imperial College London
Kensington & Chelsea College
King's College London (3)
Kingston University
Lancaster University
London School of Economics & Political Science
Loughborough University
Newcastle University
Nottingham Trent University
Plymouth College of Art
Queen Mary, University of London
Regent's University London
Royal Holloway, University of London (2)
Royal Veterinary College
School of Oriental & African Studies
The Robert Gordon University
University College London
University of Aberdeen
University of the Arts London
- Camberwell College of Arts
- Central Saint Martins College of Art & Design
- London College of Communication
- **London College of Fashion**
University of Bath
University of Birmingham
University of Brighton
University of Bristol
University of Cambridge
University of Dundee
University of East Anglia
University of Edinburgh
University of Essex
University of Exeter
University of Glasgow
University of Kent (2)
University of Leeds
University of Leicester
University of Liverpool
University of Manchester (3)
University of Nottingham
University of Oxford
University of Reading
University of St. Andrews
University of Sheffield

University of Strathclyde

University of Southampton
University of Stirling
University of Surrey
University of Sussex
University of Warwick (3)
University of West London
University of York

UNITED STATES

American University
Auburn University
Babson College
Baylor University
Bentley University
Boston College
Boston University
Brandeis University
Bucknell University
Chapman University
College of the Holy Cross
Columbia University
Dartmouth College
Dowling College
Embry-Riddle Aeronautical University
Emerson College
Eugene Lang College
Florida Institute of Technology
Florida State University
Franklin & Marshall College
Georgetown University
Grinnell College
Harvard University
Kalamazoo College
Kent State University
LIM College
Louisiana State University
Loyola Marymount University
Lynn University
Manhattan College
Marist College
Mercyhurst University
Michigan State University
Middlebury College
New York University
Northeastern University
Pennsylvania State, University Park
Pepperdine University
Pomona College
Princeton University
Quinnipiac University
Sewanee: The University of the South
Syracuse University
Texas A&M University
The George Washington University
Trinity College (CT)
Tufts University
University of California, Berkeley
University of California, Davis
University of California, Los Angeles
University of California, San Diego
University of Chicago
University of Illinois at Urbana-Champaign
University of Massachusetts, Amherst
University of Miami
University of Michigan, Ann Arbor
University of North Carolina, Chapel Hill
University of Pennsylvania
University of Southern California
University of South Carolina
Villanova University

