



**INTERNATIONAL
SCHOOL OF
DÜSSELDORF**
SINCE 1968

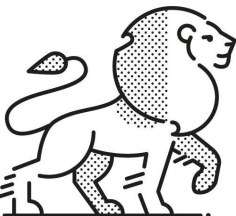
Gr. 11-12 Academic Programme & Course Choice Information

The Diploma years at ISD!

ISD High School Diploma | IB Diploma Courses | IB Diploma (DP)

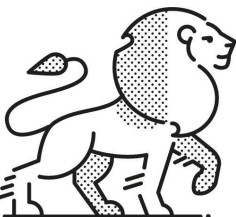


Mr. Clinton Olson
Deputy Principal
Diploma Programme (DP) Coordinator



Overview of what we aim to cover...

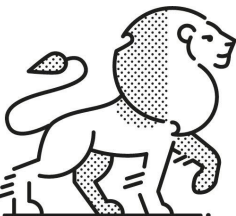
- What are the programme options for grades 11-12?
- How does each option work/operate?
- What is the process/timeline for choosing?
- Higher education considerations and support
- Questions and clarifications



Important considerations

Important questions for students to consider...

- What are my **academic interests** and **talents**?
- What are my **strongest** academic **skills** and **strengths**?
- What level of academic **challenge** am I seeking?
- Which **academic programme** and specific **HL/SL courses** do **institutions** in different countries **require**?
- Which subjects and academic programme is **best suited** to my learning?



ISD High School Diploma | IB Diploma Courses | IB Diploma

IB Diploma Courses (IBC)

- Individual subjects are taken as full IB courses for individual subject recognition
- Assessed and awarded by the IBO
- Not Abitur equivalent

OR

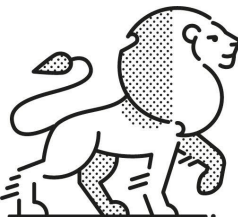
Full IB Diploma (IBDP)

- Assessed and awarded by the IBO
- Can be Abitur equivalent (with accepted subject combinations)
- Can also achieve an 'IB Bilingual Diploma' if students takes two 'A' languages



ISD HIGH SCHOOL DIPLOMA (ISD HSD)

Assessed and awarded internally by ISD
All ISD students are ISD High School Diploma students



ISD High School Diploma (ISD HSD)

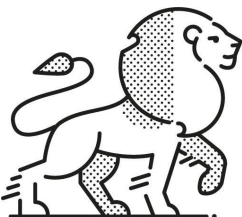
ALL ISD students are ISD HSD candidates!

INTERNALLY assessed and awarded

- ISD report cards + ISD SrS Transcript = ISD High School Diploma @ Graduation

To be awarded the ISD High School Diploma, students must...

- **Attendance:** required to be present or authorised absent **95%** of time.
- Complete four years of education (grades 9-12) or their equivalent
- Complete **grades 9 – 10** with no more than two final academic marks below **'3'**
- Earn a minimum of **40** points over **grade 11 AND 12**, with no more than four final academic grades below **'3'**, of which no more than two may be earned in 12th grade.
- Successfully complete the **Creativity | Activity | Service (C|A|S) programme**
- Be enrolled in a minimum of **five** courses in grades 11-12

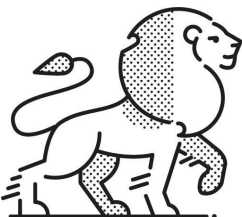


IB Diploma Courses (IBC)

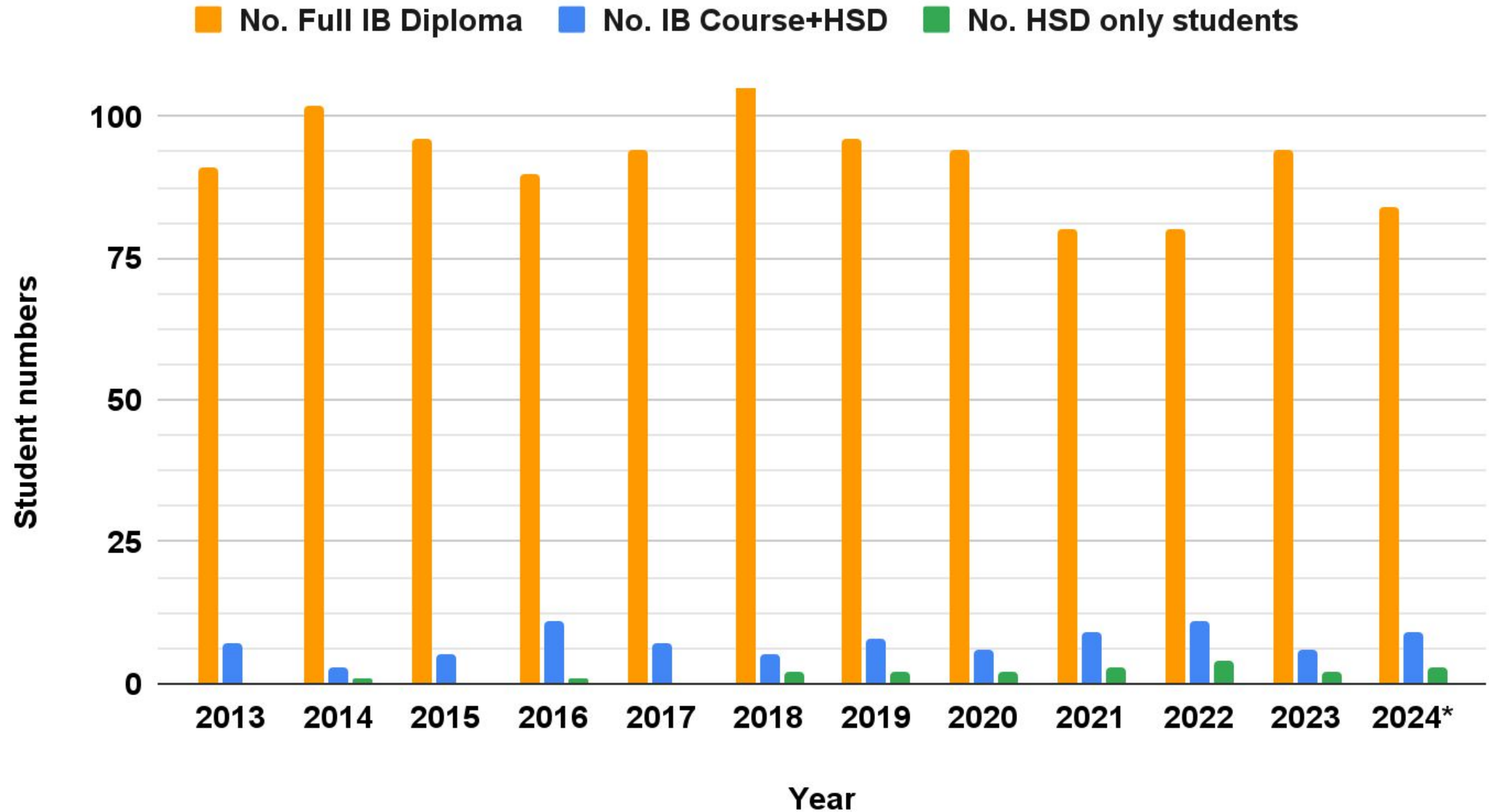
- **Can** study **five** or **six** subjects in any combination of HL/SL/HSD
- Broad and balanced curriculum
- More flexibility in subject choice
- Rigorous internal and external assessment requirements
- Theory of Knowledge (TOK) and Extended Essay (EE) are **optional**
- Creativity, Activity, Service (CAS) is **required**.

Full IB Diploma (IBDP)

- **Must** study **six** subjects and must be
 - 3 Higher Level (HL)
 - 3 Standard Level (SL)
- Broad and balanced curriculum
- Some flexibility in subject choice
- Rigorous internal and external assessment requirements
- **All IB Core** elements are **required**
 - Creativity, Activity, Service (CAS)
 - Extended Essay (EE)
 - Theory of Knowledge (TOK)

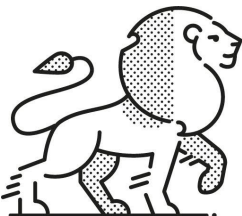


ISD programme comparison 2013-2024



An IB Diploma programme must include...

- **THREE** Higher Level (HL) courses + **THREE** Standard Level (SL) courses and in general;
- **One** course from **Group 1** – Studies in Language and literature
- **One** course from **Group 2** – Language acquisition OR another **Group 1**
- **One** course from **Group 3** – Individuals & Societies (Humanities at ISD)
- **One** course from **Group 4** – Sciences
- **One** course from **Group 5** – Mathematics
- **One** course from **Group 6** – Arts, OR a 6th course (from **Groups 1-4**)
- **All** IB Core elements (TOK, EE, CAS)



Subjects offered at ISD

Group 1 - Language and Literature

English and German Lang & Lit

English, German, Japanese Literature

**Other mother tongue A languages (SL only)*

Group 2 - Language Acquisition

English, German, French, Spanish B

Spanish and German Ab initio

Group 3 - Humanities (IB = I & S)

Digital Society, Economics, Psychology

History (SL only), Global Politics (HL only)

Group 4 - Sciences

Biology, Chemistry, Physics

Design Technology

Sports Exercise and Health Science

Environmental Systems and Societies (Group 3 or Group 4 OR both groups)

Group 5 - Mathematics

Analysis and Approaches

Applications and Interpretations

Group 6 - The Arts

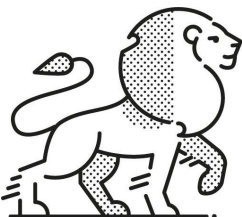
Theatre, Music, Visual Arts

[Click here to see the specific subjects offered at ISD and read the IB subject briefs](#)

Similarities & Differences Higher Level vs. Standard Level

In general...

- **SL and HL courses** consist of the **same educational aims, core syllabus and curriculum and assessment** models.
- HL courses have **approx. 8 hours** every **10 days** at ISD.
- SL courses have **approx. 6 hours** every **10 days** at ISD.
- **HL courses** allow students to **spend more time** with subjects they are **more interested in**.
- **SL courses** expose students to a range of disciplines to provide breadth of understanding and knowledge.



IBDP Assessment Diploma Courses & IB Diploma (DP)

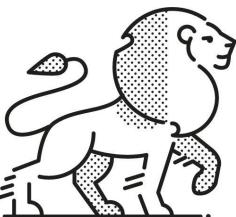
EXTERNAL assessment - exams at the end of gr. 12 is main assessment for **most** courses (not Group 6 - Arts subjects). This includes:

- essays, text-response questions, case-study questions
- structured problems, multiple-choice questions (in Sciences)
- short-response questions, data-response questions
- portfolio submission

INTERNAL assessment - is also used in all courses. This includes:

- oral presentations and essays in the languages
- research projects, lab work, fieldwork, projects
- investigations in mathematics
- artistic performances

The weighting of external / internal assessment varies by subject and is somewhere between 80% external / 20% internal to 60% external / 40% internal



The IB Diploma (DP) Core

Creativity | Activity | Service (CAS)

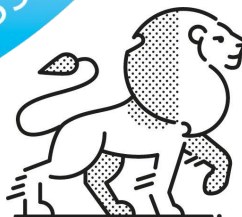
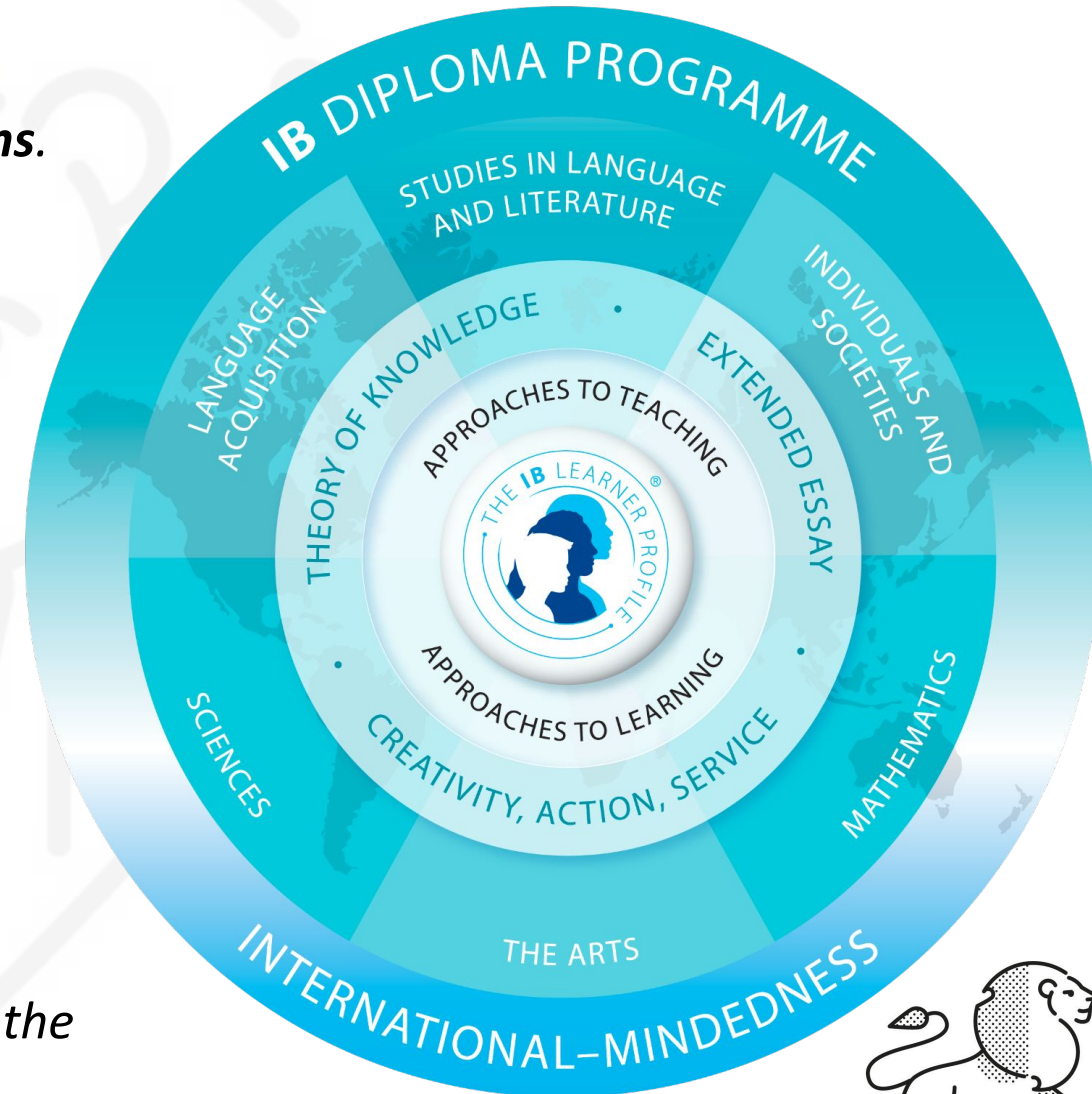
- *Begins at the start of G11. Must span 18 continuous months.*
- *Planned in advisory and CORE period, but experiences and projects happen in out of class time*
- *Supported by a CAS Advisor (who is the students advisory teacher) and the CAS coordinator.*

Theory of Knowledge (TOK)

- *IBDP course with assigned TOK teacher*
- *Internally and externally assessed*
- *Scheduled and taught classes – 5 x per cycle (CORE period)*

Extended Essay (EE)

- *4000 word research based academic essay*
- *Begins in Nov of grade 11 and is a 12 month process.*
- *Completed outside of class with support sessions (5 hours)*
- *Supported by an individual and assigned EE supervisor and the EE coordinator.*



IB Diploma Results / Grades

The IB Diploma is awarded in numbers...

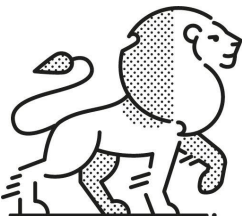
- Students receive a final grade for each subject between 1 - 7
 - Six subjects between 1 - 7 = **42 maximum subject points.**
- There are 3 possible Bonus Points in TOK and the Extended Essay.
(TOK and EE are graded A - E)
- The maximum IB Diploma score is **45 points.**

		THEORY OF KNOWLEDGE			
E X T E N D E D		Grade A	Grade B	Grade C	Grade D
	Grade A	3	3	2	2
Grade B	3	2	2	1	
E S S A Y	Grade C	2	2	1	0
	Grade D	2	1	0	0

Earning the IB Diploma (IB DP)

To achieve the IB Diploma the minimum a student must have is ...

- 24 points and
- **ALL CAS** requirements must be met and
- **D** or higher in both TOK & the Extended Essay (EE)
- A score in all six subjects and no missing components (exams or IA's)
- No grade of **1** in any subject
- No more than two grades of **2**
- No more than three grades of **3** or less
- A minimum of **12** combined points at **Higher Level (HL)**
- A Minimum of **9** combined points at **Standard Level (SL)**



Academic Programme & Course Selection

Choose the **academic programme** that best suits **YOU**.

- ISD HSD **only** | ISD HSD subjects + Diploma Courses | ISD HSD + IB Diploma (DP)

Grade 10 [course selection timeline](#)

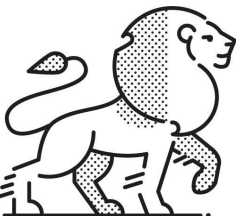
Obtain [teacher recommendations](#) and subject advice

Students must upload their completed teacher recommendation form by **March 1st to** receive their final course selection form.

Complete your final course selections **before the deadline**.

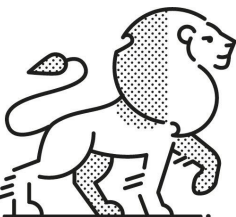
Final course selection forms are due to to Mrs Massong by **March 20th**

- **Initial scheduling and class allocations are based on programmes submitted by this deadline!**



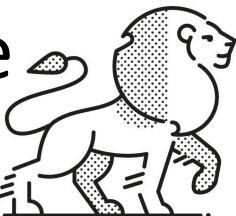
From choices to confirmed programmes

- Unfortunately not all choices and combinations will be possible, or automatically approved.
 - Particular subject or level combinations may not be possible within the school schedule and staffing availabilities.
 - Subjects OR levels (HL/SL) do not have enough students
 - If signatures from teachers and/or parents are missing or forms not completed on time, students go to the back of priority lists.



From choices to confirmed programmes

- Where teachers indicate multiple academic (AC) or effort concerns (EC), or when a subject or level is Not Recommended the student, parents and the school must consider whether it is an appropriate choice of subject or academic programme. Students in inappropriate programmes are unhappy, and do poorly.
- In these instances, the Diploma Coordinator will contact the student and parents to discuss alternatives and the risks in undertaking programmes that are not recommended.
- Where there are no major concerns, academic programmes are automatically confirmed.

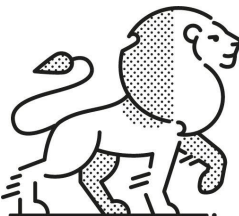


Subject Changes

- Once the academic year begins subject changes are very problematic and sometimes are no longer even possible.
 - Classes are full, it may not be possible in the schedule, the learning gap and work required to catch up becomes too big.

However, students can request course changes through the Diploma Coordinator up until...

- ***November 1st - deadline for changing language subjects.***
- ***November 1st - deadline for any changes in an Abitur programme.***
- ****Jan 31st (of Grade 11) - deadline for all other subject changes.***



Gr. 11/12 Academic Programme & Course Choice: Higher Education Overview

Grade 10 Introduction



Mr. Layman – Career & Higher Education Counsellor (A-K)

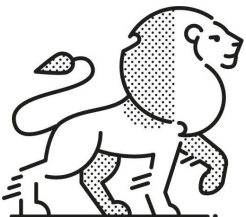
Mrs. Mika – Career & Higher Education Counsellor (L-Z)



Mrs. Kitagawa – Japan

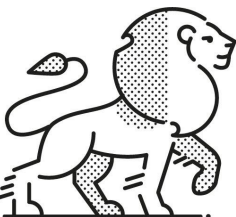


Frau Wagner – Germany



This is what it comes back to...

- What are my **academic interests** and **talents**?
- What are my **strongest academic skills** and **strengths**?
- What **level of academic challenge** am I seeking?
- Which **academic programme** and specific **HL/SL courses** do **institutions** in different **countries** require?
- Which academic programme is **best suited** to my learning?



Visualizing your CHOICE

DIPLOMA COURSE RESULTS

Gr. 11-12

Any combination of up to **6** HL/SL DP courses

E.G. - **2** HL + **4** SL or **1** HL + **5** SL or **6** SL

Flexible course choice from DP subject groups

CAS **required**

TOK/EE **optional**

Choose which DP EXAMS to sit

EXTERNALLY examined & assessed by IBO

ACCEPTED in:

*UK, *NL (Applied Science), US, CAN, *Japan

[*UCAS Tariff](#) + [Tariff Calculator](#)

OR

IB DIPLOMA (DP)

Gr. 11-12

3 HL + **3** SL

Required course choice from DP subject groups

TOK/EE/CAS **required**

All DP EXAMS **required**

EXTERNALLY examined & assessed by IBO

ACCEPTED worldwide

REQUIRED in:

DE, CH, SWE, DK, *UK, *NL (Research). *Japan

[COUNTRY RECOGNITION STATEMENTS](#)

+

ISD HIGH SCHOOL DIPLOMA

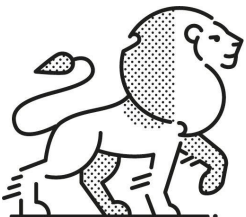
Gr. 9-12 (Senior School TRANSCRIPT!)

ISD curriculum (MYP 9/10 + DP/HSD Courses 11/12)

CAS **Required**

INTERNALLY assessed by ISD teachers (Report Cards/SRS Transcript)

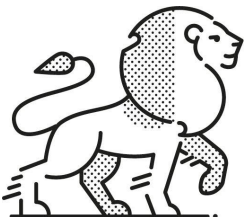
ACCEPTED in: *US (+SAT/ACT), CAN, Japan, *NL (Applied Science), Some Private EU



The best academic programme for YOU?

RIGOUR (Challenge!)

- **What level of academic challenge are you looking for?**
 - Higher education institutions are seeking students who **challenge** themselves academically
 - The **RIGOUR** of the **academic programme** is an important factor in the admission decision
- **Rigorous (Challenging)**
 - **ISD High School Diploma** (*CIS & NEASC accredited)
 - Grade 9-12 ISD MYP+HSD/DP Courses – **INTERNAL** Report cards/grades (**SRS TRANSCRIPT!**)
- **VERY Rigorous (Very Challenging)**
 - **ISD High School Diploma** + **Diploma Course Results**
 - **INTERNALLY** assessed ISD grades + **EXTERNALLY** examined DP courses
- **MOST Rigorous (MOST Challenging)**
 - **ISD High School Diploma** + **IB Diploma (DP)**
 - Choices must follow DP regulations - 3 HL + 3 SL + TOK/EE/CAS
 - **INTERNALLY** assessed ISD grades + **EXTERNALLY** examined DP courses



Which Academic Programme?

Other countries: IBO [Country Recognition Statements](#)

ISD High School Diploma + Diploma Courses

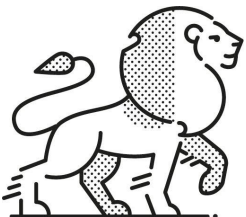
ACCEPTED

- **Canada**
- **EU:** Some **private** institutions
 - Especially **UK-** and/or **US-**accredited
- **Japan**
- **The Netherlands:** [Universities of Applied Sciences](#)
 - **Any DP Math SL/HL** course for **Business/Economics!**
- **United Kingdom:** [UCAS Tariff](#)
 - 2 HL courses related to study interest + 4 SL courses
- **United States**
 - [ISD HS Diploma + Diploma Courses](#) + **SAT/ACT**
ACCEPTED at majority of institutions
 - [Test optional schools](#) (**NO** ACT/SAT!)

IB Diploma (DP)

REQUIRED

- **Canada & United States**
 - [IB Diploma \(DP\)](#) PREFERRED (*REQUIRED) at selective institutions
- **EU:** **Austria; Denmark; France; Ireland; Spain; Sweden...**
- ***Germany & *Switzerland**
 - Must meet ***country-specific** guidelines!
- **Japan**
 - [IB Diploma \(DP\)](#) PREFERRED (*REQUIRED) at selective/national institutions
- **The Netherlands:** [Research Universities](#)
 - **Math Analysis & Approaches SL** or **Applications & Interpretation HL** for **Business/Economics!**
- **United Kingdom**
 - **England; Northern Ireland; Scotland; Wales**



German Abitur/DP Equivalence

IB Diploma (DP) REQUIRED for direct entry to ALL institutions – NO EXCEPTIONS!

Languages (Group 1 & 2)

- **TWO** Language A courses (SL or HL)
 - Literature A and/or Language & Literature A
 - German A **not** required for Abitur equivalence
 - School Supported Self-Taught (SSST) Literature A SL accepted
- **ONE** Language A (SL or HL) + **ONE** Language B
 - Language B: German/English/French/Spanish
 - If Language B is the ***continuous foreign language** (fortgesetzte Fremdsprache) it must be ***HL**

Individuals & Societies (Group 3)

- **ONE** of Economics / Global Politics / History / Psychology

Science (Group 4)

- **ONE** of Biology / Chemistry / Physics

[KMK](#) | [Deutschland for Dummies Presentation](#)

Frau Wagner | Office N009 | wagner@isdedu.de

6th subject **only** (in place of Arts - Group 6)!

- ab initio languages (Group 2)
- Digital Society (Group 3)
- Environmental Systems & Societies (Group 3/4)
- Sport Exercise & Health Science (Group 4)
- Design Technology (Group 4)

Other **key** points

- **ONE** of Language A/B **HL**, Science **HL**, or Math **HL**
- All **Math** and **Arts** courses accepted
- All subjects studied **continuously** for **2** years
 - **No course changes** after Oct. 31st of Gr. 11
 - Not even HL to SL or vice versa
- ***Non-Abitur** equivalent **IB Diploma**
 - Fachabitur equivalent **NOT** possible
 - ***Studienkolleg** (1-yr pre-uni) + Feststellungsprüfung
 - Eligible for 3-year degree programmes in Germany
- **Strict DP requirements** for ***SWITZERLAND**
- **More flexible:** **AUSTRIA**



What are your interests/strengths?



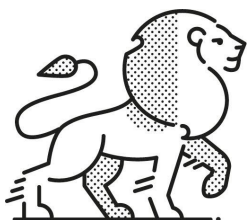
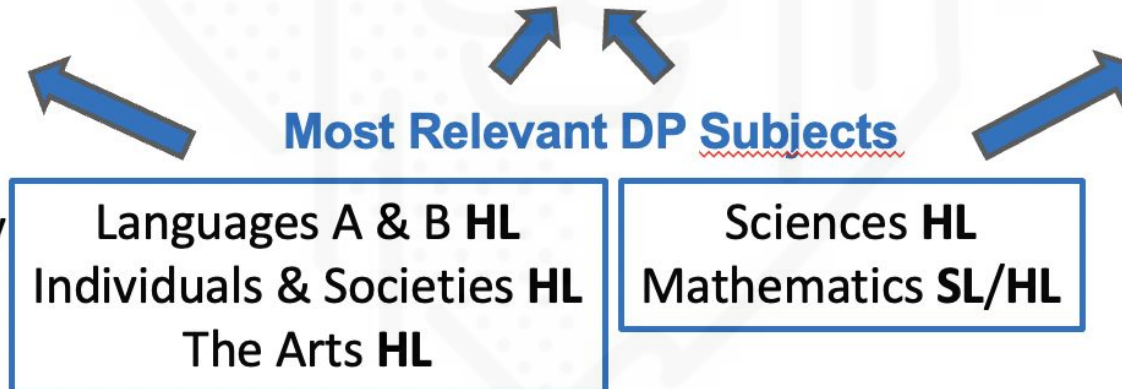
Law
Politics & International Relations
History
Classics & Literature
Languages & Linguistics
Communications & Media
Visual Arts
Creative Arts
Performing Arts
Anthropology & Sociology
Archaeology
Philosophy



*Business & Management (B.A. or B.Sc.)
*Psychology (B.A. or B.Sc.)
*Economics (B.A. or B.Sc.)



Engineering
Medicine
Astronomy
Biochemistry
Biology
Chemistry
Computer Science
Mathematics
Physics
Statistics
Natural Sciences
Physical Sciences



Essential & Recommended Courses

SUBJECT	ESSENTIAL HL	ESSENTIAL SL	RECOMMENDED
(Vet) Medicine/ Dentistry	Chemistry HL *Biology HL	Math Analysis & Approaches SL	*Some institutions prefer/accept Physics HL
Business/ Management	NONE	*Math Analysis & Approaches SL (*Canada/NL)	Economics HL/SL *Math App & Int HL
Engineering/ Physics	Physics HL Math Ana & App HL <u>or</u> Math App & Int HL	*2 nd SL science (*Canada: Chem <u>or</u> Bio)	Design Technology SL/HL
(Bio)Sciences	Chemistry HL Biology HL	Math Analysis & Approaches SL	
PURE Economics	*Math Analysis & Approaches HL		Economics HL *Math App & Int HL may be accepted
Psychology	NONE	*Math Analysis & Approaches SL (B.Sc.)	Psychology HL Math App & Int HL
History/Politics/ International Relations	NONE		History HL Economics HL/SL Language A HL (*Lit)
Law	NONE		Language A HL (*Lit) History HL

SWITZERLAND

[Minimum Requirements](#)

GENERAL

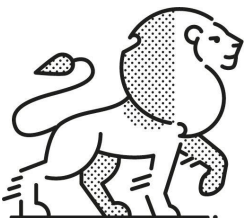
[ISD Counselling](#)

UniGuide

[Which courses?](#)

Informed Choices

[Which courses?](#)



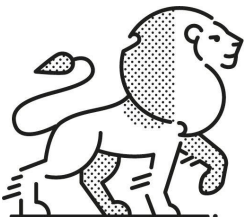
- IBO Mathematics

- **Analysis & Approaches SL & HL**

- IBO: generally for students interested in **STEM** subjects with **substantial maths content** such as **mathematics, engineering**, the **physical sciences** or **economics**.
- real and **abstract** applications of ideas **with** or **without technology**.
- developing their mathematics to become fluent in the construction of **mathematical arguments** and **mathematical thinking**.
 - *Higher Education: *A&A SL required or preferred for some social sciences (Psychology B.Sc.), business, natural sciences, medicine in some countries.*

- **Applications & Interpretation SL & HL**

- IBO: generally for students interested in **social sciences, natural sciences, medicine, statistics, business, engineering**, some **economics, psychology**, and **design***.
- developing their mathematics for **describing our world** and **solving practical problems**.
- maths in a **practical context**, while harnessing the **use/power** of **technology**.
 - *Higher Education: *A&I SL for humanities/arts, some business/psychology (B.A.) in some countries, performing arts, creative arts.*



Application & interpretation SL

vs.

Analysis & approaches SL

II. Curriculum model overview

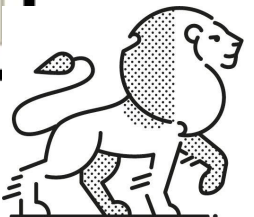
Mathematics: applications and interpretation and Mathematics: analysis and approaches share 60 hours of common content.

Syllabus component	Recommended teaching hours	
	SL	HL
• Number and algebra	16	29
• Functions	31	42
• Geometry and trigonometry	18	46
• Statistics and probability	36	52
• Calculus	19	41
Development of investigational, problem-solving and modelling skills and the exploration of an area of mathematics	30	30
Total teaching hours	150	240

II. Curriculum model overview

Mathematics: analysis and approaches and Mathematics: applications and interpretation share 60 hours of common SL content.

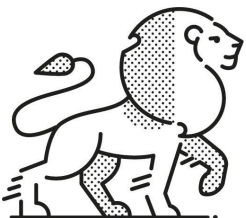
Syllabus component	Recommended teaching hours	
	SL	HL
• Number and algebra	19	39
• Functions	21	32
• Geometry and trigonometry	25	51
• Statistics and probability	27	33
• Calculus	28	55
Development of investigational, problem-solving and modelling skills and the exploration of an area of mathematics	30	30
Total teaching hours	150	240



The Math Choice

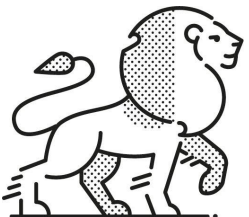
A&I HL or A&A SL?

Applications & interpretations SL	Applications & interpretations HL	Analysis & approaches SL	Analysis & approaches HL
<p>Visual Arts Creative Arts Performing Arts Humanities, Arts & Social Sciences</p> <p>History Politics</p> <p>International Relations Languages Sociology Philosophy</p> <p>*Psychology: B.A. *Business: UK/US/DE/NL (Applied science)</p>	<p>Science & Medicine</p> <p>Medicine Biology Chemistry Biomedicine Biochemistry Etc...</p> <p>Engineering (*CAN/US)</p> <p>Social Sciences</p> <p>*Business: UK/NL/CAN *Psychology: B.Sc. *<u>Pure</u> Economics: UK/NL</p>	<p>Science & Medicine</p> <p>Medicine Biology Chemistry Biomedicine Biochemistry Etc...</p> <p>Engineering (*CAN/US)</p> <p>Social Sciences</p> <p>*Business: UK/NL/CAN *Psychology: B.Sc.</p>	<p>Engineering (*UK/NL)</p> <p>Mathematics & Physics</p> <p>Social Sciences</p> <p>*<u>Pure</u> Economics: UK/NL</p>



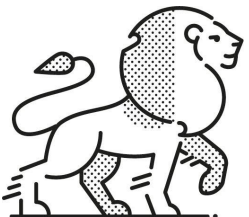
What next?

- **Use MaiaLearning (www.maialearning.com)**
 - Multiple assessments that connect to **study** and **career** options – ‘Character’ + ‘Assessments’
 - Research suggested **careers** and **related careers** - ‘Careers’ + ‘Career search’
 - Research **degree programs/courses** in various countries – ‘Universities’ + ‘search’
 - Additional **country** and **subject-specific** links - ‘Resources’ + ‘School resources’
 - **Which DP courses fit best with your interests and your strengths?**
- **Gr. 11-12 academic programme and course choice guidance (January-May)**
 - Consider the most appropriate academic programme choice: **ISD HSD + Diploma Courses? + IB Diploma?**
 - Consider your Standard Level / Higher Level subjects
 - Consult the [IBO Course Selection Guidance](#)
 - Check the IBO [Country Recognition Statements](#)
 - Use DP course/uni subject references to help you plan your choices
- **IHS Course Fair – speak to current Gr. 11/12 students about courses!**
- **Further/higher education and career questions**
 - Which country/countries? | Which subject/major? | Career plans?
- **We check each course selection form for potential problems/conflicts**
- **[We are available to meet](#) with students and parents to answer all of your questions**
 - [Mr Layman](#) (Last names A-K) | [Mrs Mika](#) (Last names L-Z)
 - Japan: [Mrs Kitagawa](#)
 - Germany: *[Frau Wagner](#) (*See Mr. Layman or Mrs. Mika)



Where to begin?

- **ISD Counselling Department website**
 - [Gr. 11 & 12 Programme Choices](#)
- **Canada**
 - [University Study Canada](#) | [Universities Canada](#) | [Study in Canada](#)
- **EU**
 - [EU Commission Country Profiles](#)
- **Germany**
 - [DAAD](#) | [DAAD International Programmes](#) | [The IB Diploma, Abitur & German Higher Education Admissions](#)
- **Ireland**
 - [Central Applications Office \(CAO\)](#) | [CAO Course Search](#)
- **Japan**
 - [Japan Study Support](#) | [Study in Japan](#) | [Japan Student Services](#)
- **The Netherlands**
 - [Study in NL](#) | [Find Your Study Programme](#)
- **United Kingdom**
 - [UCAS Search](#) | [Guardian University Guide](#)
- **United States**
 - [College Board Big Future](#) | [Niche College Search](#)
- The **North Building LRC** has a large number of print resources
- **Email from Counselling Department with DP Course Recommendations + FAQ's**
 - Coming soon!



How can I find out more?

- DP Coordinator - Mr Olson
 - EE Coordinator - Dr Kharun
 - C|A|S Coordinator - Dr O'Brien
- Links in this presentation + IBO website
- ISD Portal
- International Honour Society DP Course Fair
- Teachers / class discussions
- [ISD Counselling Department](#)
- Older sibling(s)
- Current Grade 11 & 12 ISD students

